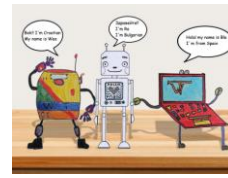




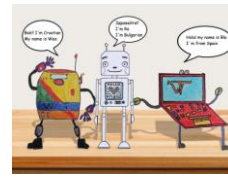
Co-funded by the  
Erasmus+ Programme  
of the European Union



**WM: "WEARABLE METHODOLOGY" A NEW METHODOLOGY BASED ON THE USE OF INNOVATIVE TECHNOLOGIES FOR EDUCATION**

**2016-1-ESO1-KA201-025397**

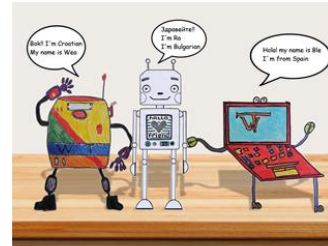
# **SURVEY FOR STUDENTS**



**WM: "WEARABLE METHODOLOGY" A NEW METHODOLOGY BASED ON THE USE OF INNOVATIVE TECHNOLOGIES FOR EDUCATION**

2016-1-ESO1-KA201-025397

**SURVEY FOR STUDENTS  
RESPONDE A ESTAS PREGUNTAS**



**MOTIVATION:**

1) How was your experience with the activity (mark the one that best reflects how you felt)



2) Would you like to play again (put an X)

Yes	Maybe	No

3) Do you prefer to play with the smartphone or the wearable device?

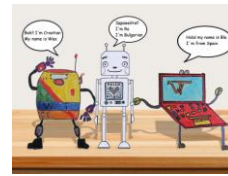
- Smartphone
- Wearable Device

4) Did you have a good time?

- a. Yes
- b. No



Co-funded by the  
Erasmus+ Programme  
of the European Union



**WM: "WEARABLE METHODOLOGY" A NEW METHODOLOGY BASED ON THE USE OF INNOVATIVE TECHNOLOGIES FOR EDUCATION**

**2016-1-ESO1-KA201-025397**

## COLLABORATION

- 5) Do you prefer to play in groups or individually?
  - a. Group
  - b. Individually
  
- 6) Have your classmates helped you?
  - a. Yes
  - b. No
  
- 7) Have you helped your classmates?
  - a. Yes
  - b. No