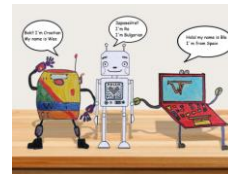




Co-funded by the
Erasmus+ Programme
of the European Union



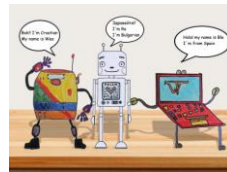
WM: "WEARABLE METHODOLOGY" A NEW METHODOLOGY BASED ON THE USE OF INNOVATIVE TECHNOLOGIES FOR EDUCATION

2016-1-ESO1-KA201-025397

SURVEY FOR TEACHERS



Co-funded by the
Erasmus+ Programme
of the European Union



WM: "WEARABLE METHODOLOGY" A NEW METHODOLOGY BASED ON THE USE OF INNOVATIVE TECHNOLOGIES FOR EDUCATION

2016-1-ESO1-KA201-025397

SURVEY FOR TEACHERS RESPONDE A ESTAS PREGUNTAS



Respond from 1 to 5 on each statement

1 (No agreement), 2.3 (Somewhat agree) 4 and 5 (Strongly agree)

1. I would like to use the Wearable Methodology activity frequently ()
2. I found the game very complex ()
3. I think the game is easy to use ()
4. I think I need computer support to use it ()
5. I found the operation of the game quite logical ()
6. I think it is very complex ()
7. I think everyone could use it ()
8. I found the game cumbersome to use ()
9. I have felt very safe using the game ()
10. I need to learn many things to control the game ()
11. I have lost control of the class ()
12. I prefer to control the game with smartobjects than from a Tablet ()
13. I knew what I had to do in every moment ()
14. I have felt overwhelmed ()